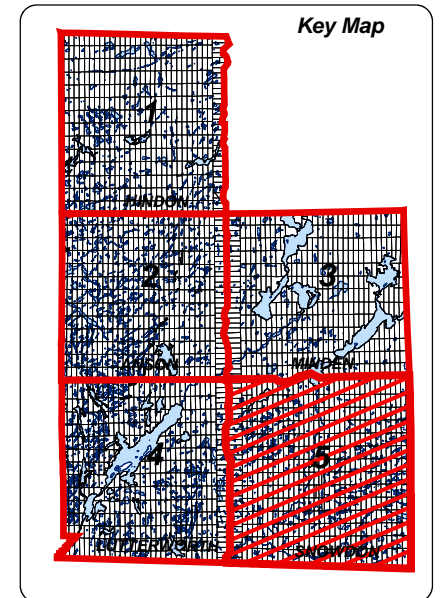


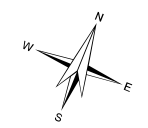
**TOWNSHIP OF MINDEN HILLS  
OFFICIAL PLAN**  
**GEOGRAPHIC TOWNSHIP OF SNOWDON  
SCHEDULE A5**



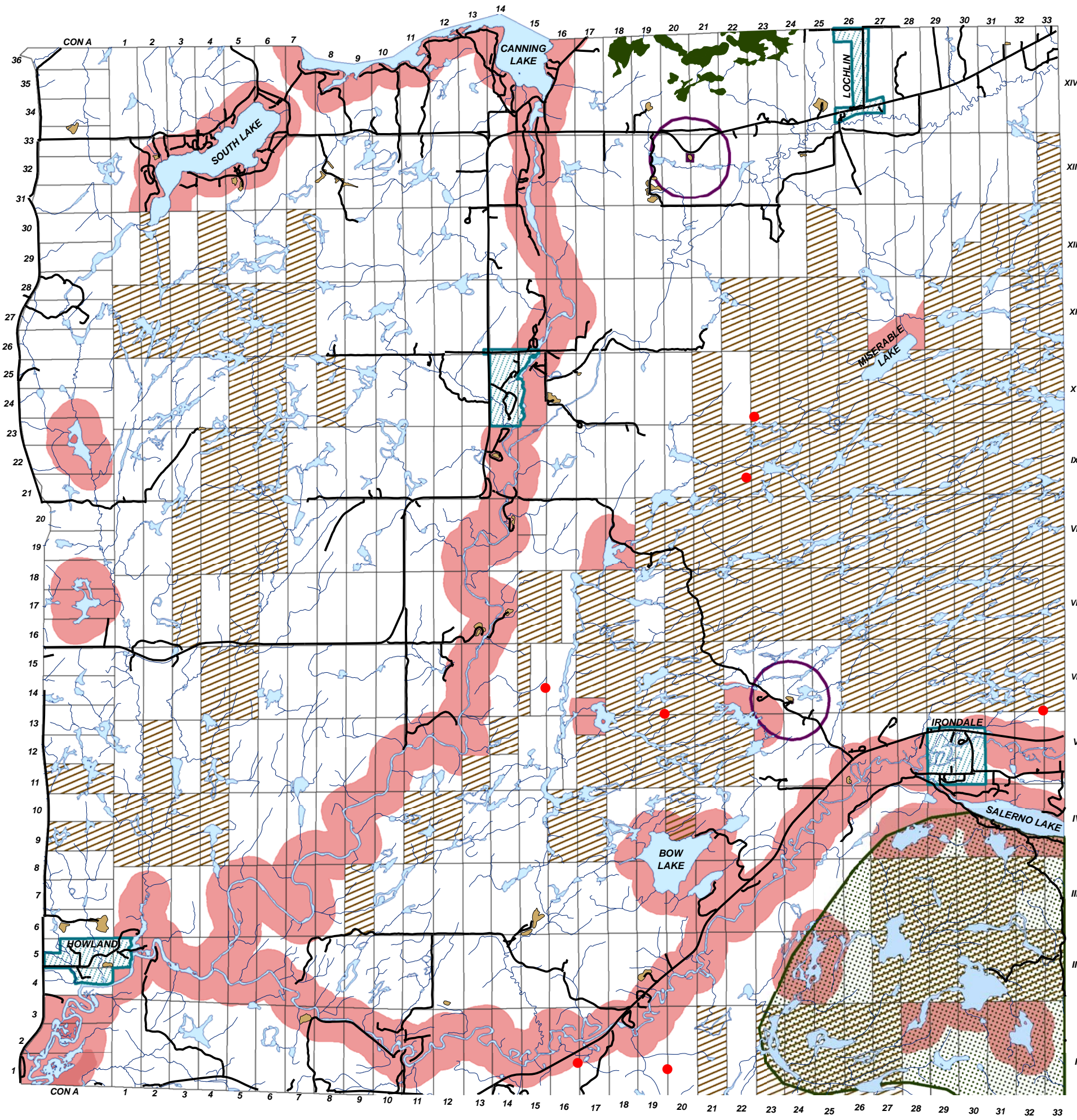
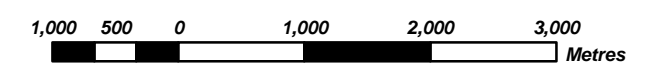
**LEGEND**

	Settlement Area
	Rural
	Waterfront
	Wilderness
	Provincially Significant Wetland
	Floodway
	Mineral Aggregate Resources
	Areas of High Mineral Potential
	Waste Management
	Mining Hazard
	Roads
	Lot & Concession Lines
	Waste Management Assessment Area

**OFFICE CONSOLIDATION  
TO - OCTOBER 31, 2007**



1 : 60 000



BASE MAP SOURCE:  
MNR NRVIS Mapping, 2002  
Municipal Property Assessment Corporation - Assessment Maps

NOTE:  
This Map Is For General Illustration Purposes ONLY.  
For Boundary Interpretations, Please Contact The  
Township Of Minden Hills Planning Department.

