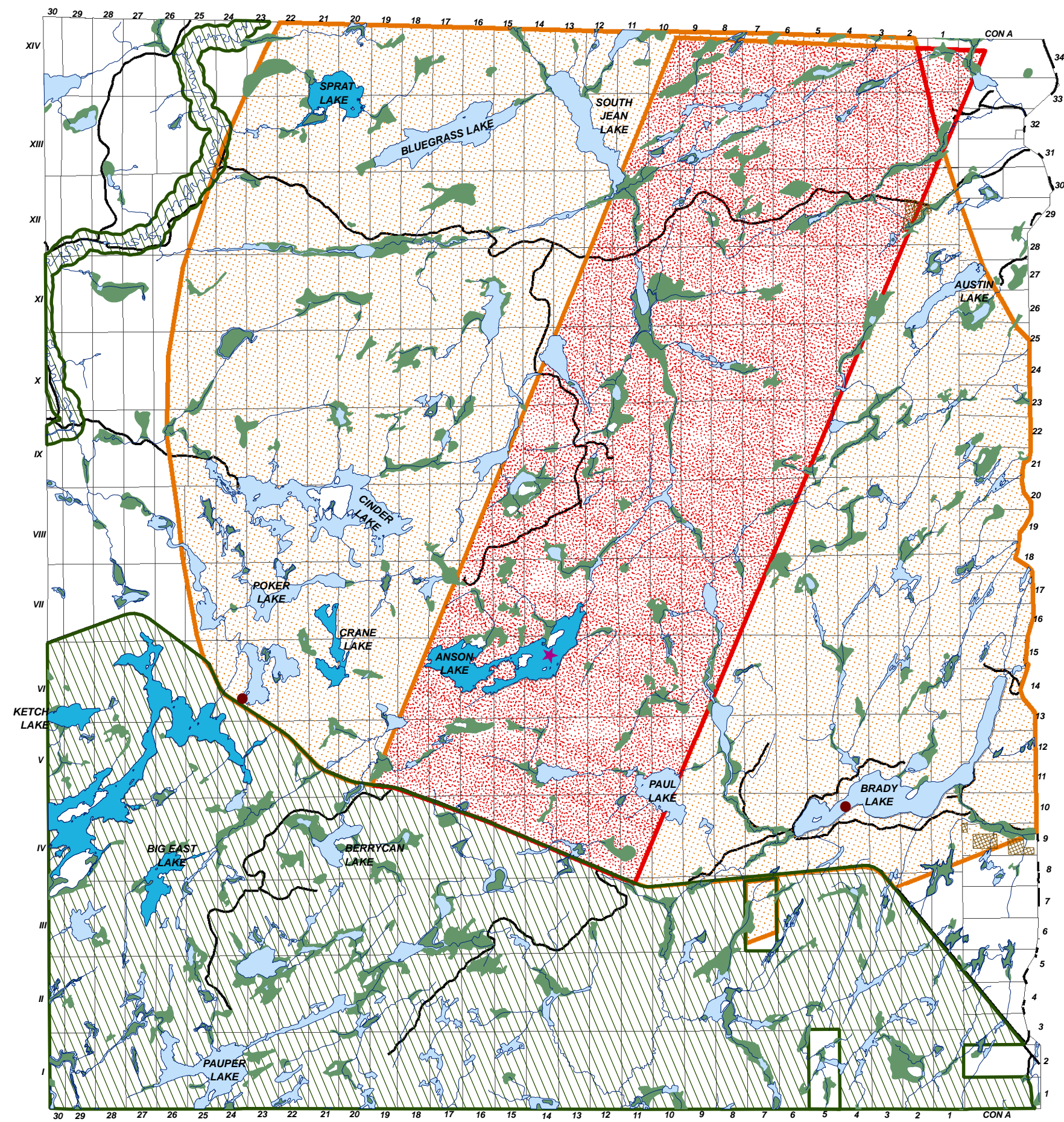
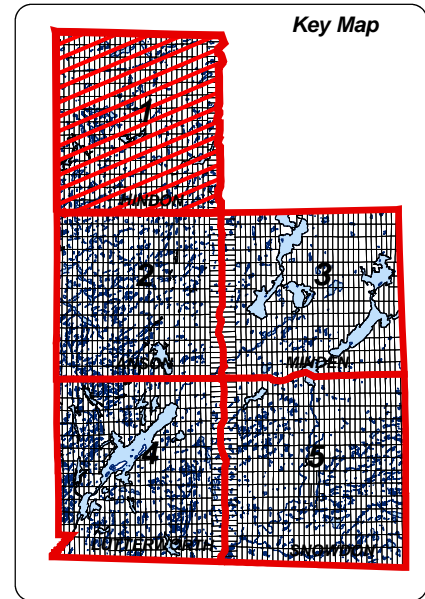


**TOWNSHIP OF MINDEN HILLS
OFFICIAL PLAN**

**GEOGRAPHIC TOWNSHIP OF HINDON
SCHEDULE B1**



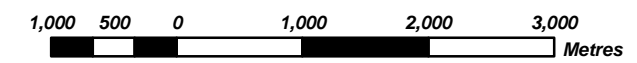
LEGEND

- Lake Trout Spawning Area
 - Fish Sanctuary
 - MNR Access Point
 - Municipal Access Points
 - Aggregate Resources
 - Ontario Living Legacy Sites
 - Moose Early Wintering Area
 - Deer Yard (Stratum 1)
 - Deer Wintering Area (Stratum 2)
 - Wetlands
 - Lakes
- THERMAL WATER TEMPERATURES**
- Cold Water
- CAPACITY LEVELS**
- At Capacity
 - Near Capacity

**OFFICE CONSOLIDATION
TO - OCTOBER 31, 2007**



1 : 60 000



BASE MAP SOURCE:
MNR NRVIS Mapping, 2002
Municipal Property Assessment Corporation - Assessment Maps
Ministry of Northern Development and Mines
Haliburton County - Distribution of Sand & Gravel Deposits

NOTE:
This Map Is For General Illustration Purposes ONLY.
For Boundary Interpretations, Please Contact The
Township Of Minden Hills Planning Department.

