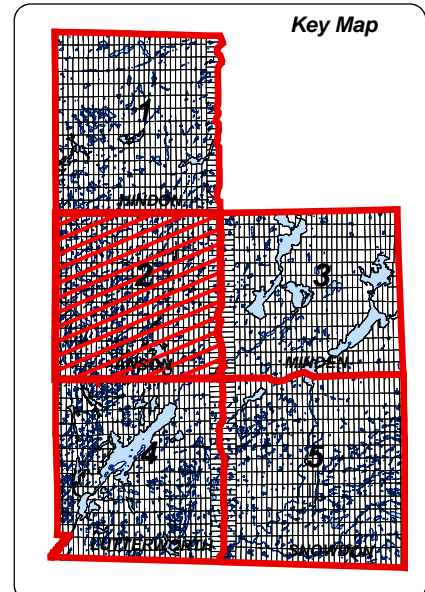
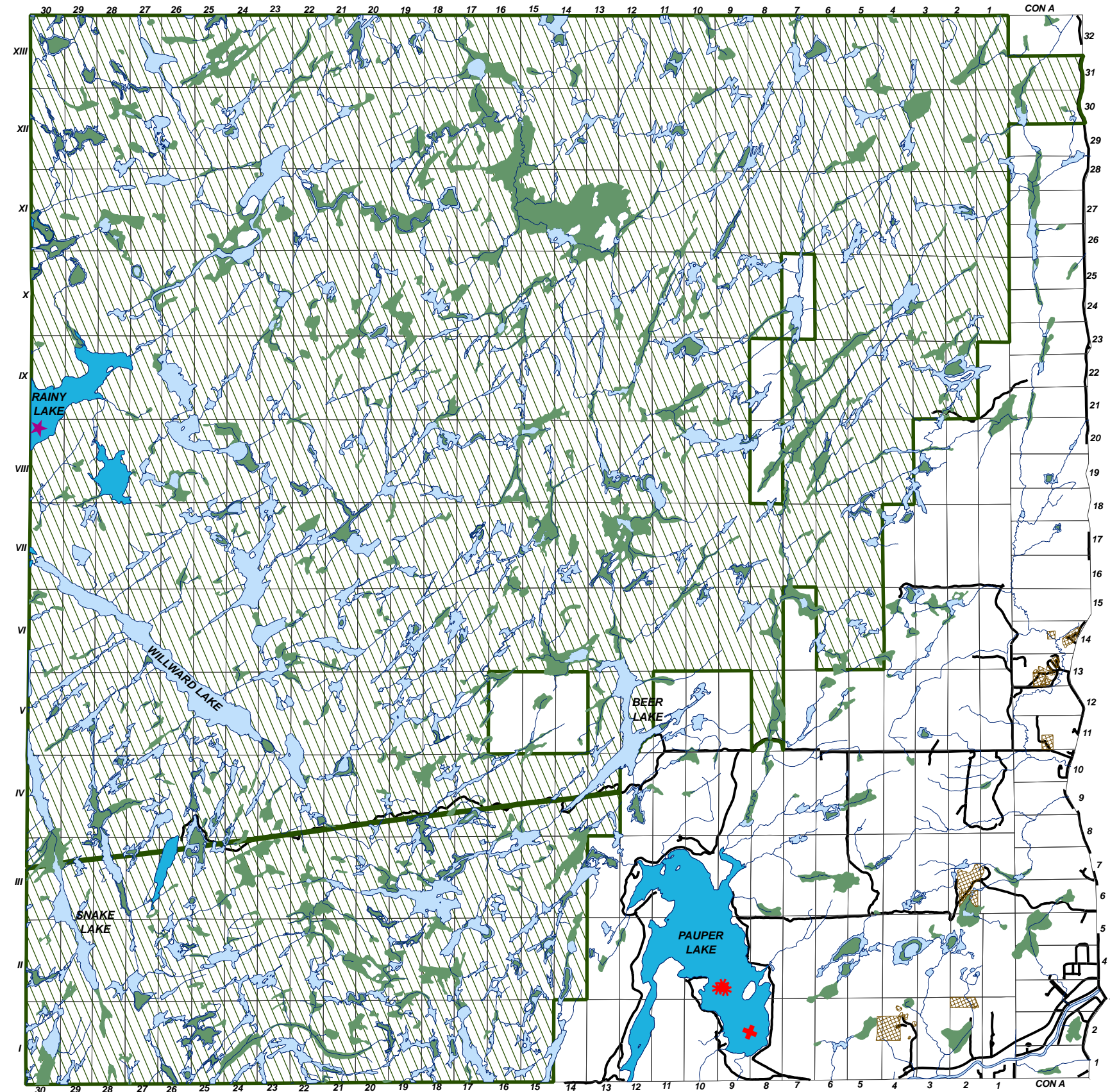


**TOWNSHIP OF MINDEN HILLS
OFFICIAL PLAN**

**GEOGRAPHIC TOWNSHIP OF ANSON
SCHEDULE B2**



LEGEND

- * Lake Trout Spawning Area
- ▲ Fish Sanctuary
- MNR Access Point
- Municipal Access Points
- Aggregate Resources
- Ontario Living Legacy Sites
- Moose Early Wintering Area
- Deer Yard (Stratum 1)
- Deer Wintering Area (Stratum 2)
- Wetlands
- Lakes

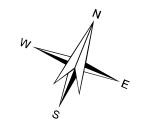
THERMAL WATER TEMPERATURES

- Cold Water

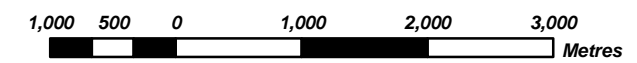
CAPACITY LEVELS

- + At Capacity
- ★ Near Capacity

**OFFICE CONSOLIDATION
TO - OCTOBER 31, 2007**



1 : 60 000



BASE MAP SOURCE:
MNR NRVIS Mapping, 2002
Municipal Property Assessment Corporation - Assessment Maps
Ministry of Northern Development and Mines
Haliburton County - Distribution of Sand & Gravel Deposits

NOTE:
This Map Is For General Illustration Purposes ONLY.
For Boundary Interpretations, Please Contact The
Township Of Minden Hills Planning Department.

