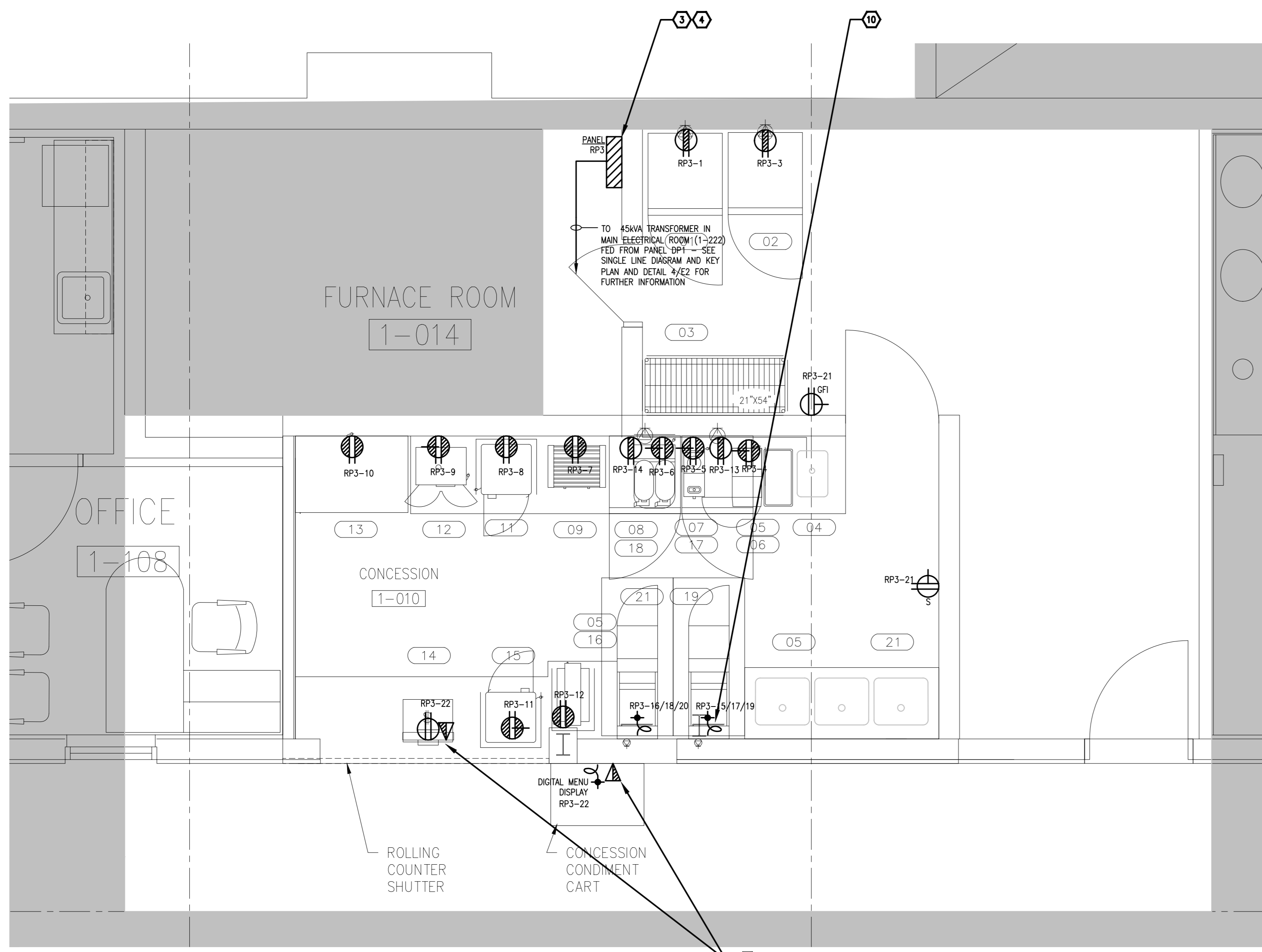


1
E2
1:30
GROUND FLOOR - CONCESSION STAND
LIGHTING & FIRE ALARM - NEW WORK

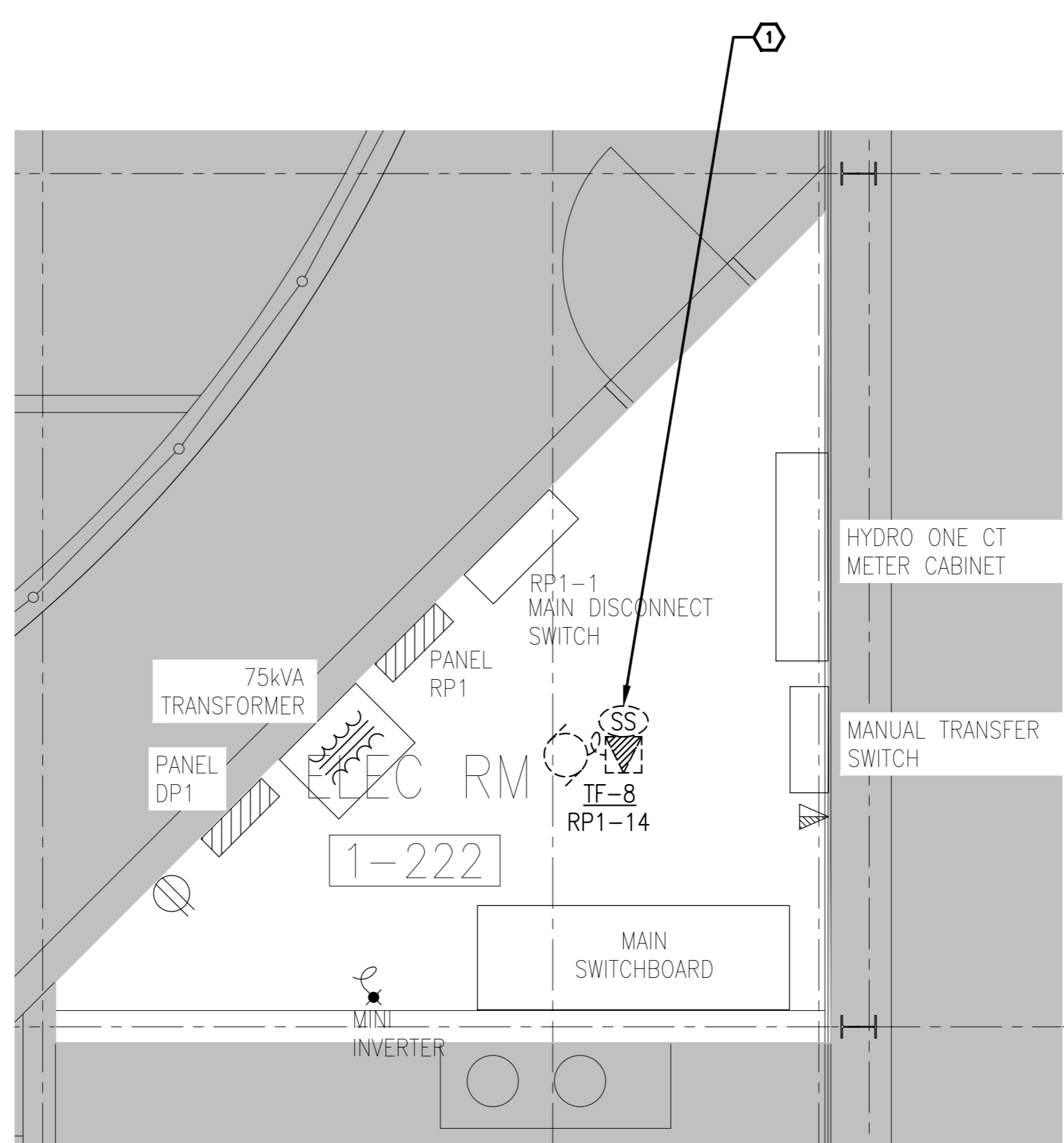


2
E2
1:30
GROUND FLOOR - CONCESSION STAND
POWER & SYSTEMS - NEW WORK

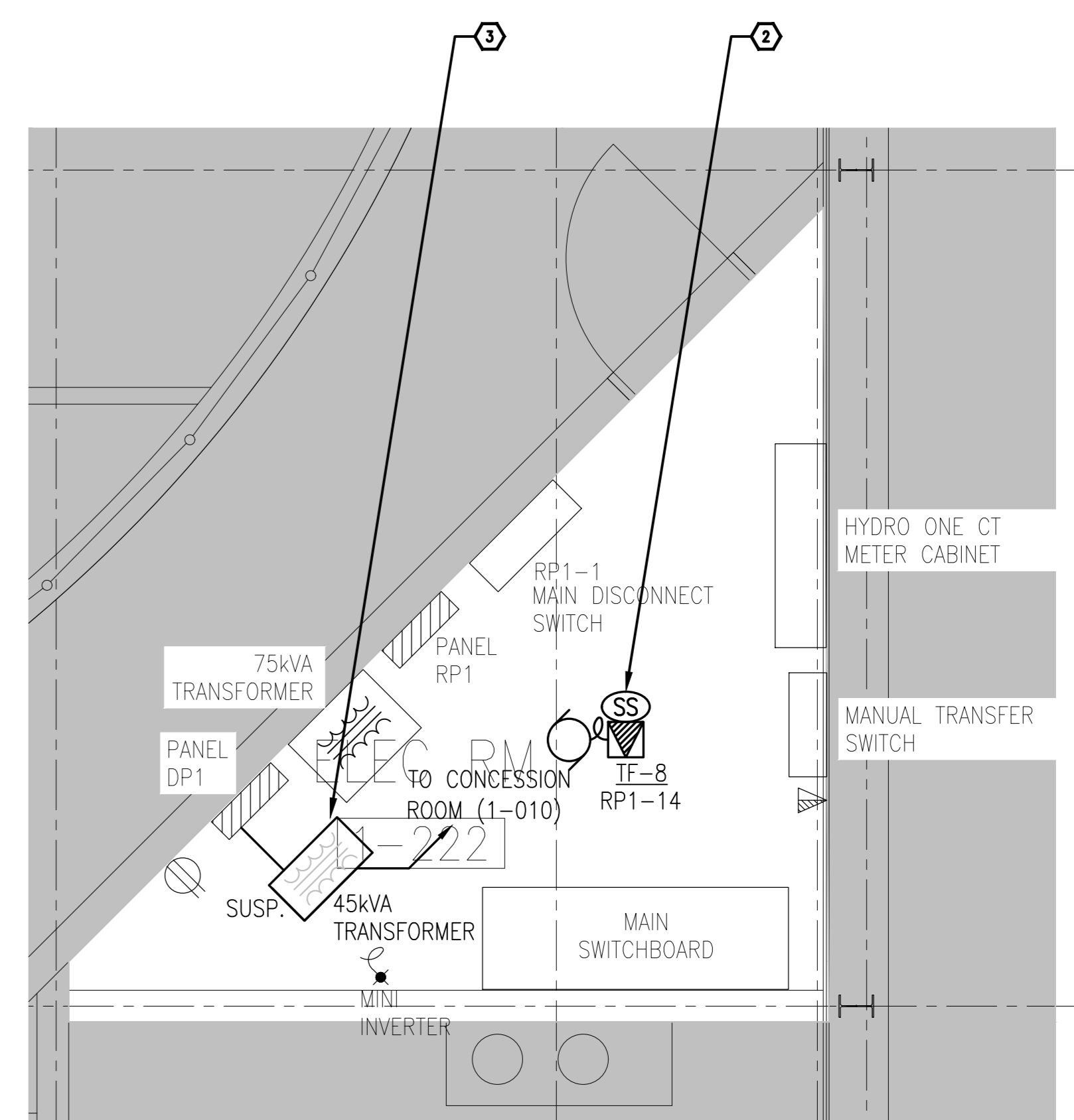
- DRAWING NOTES**
- EXISTING 120V, FRACTIONAL TRANSFER FAN TO BE REMOVED BY MECHANICAL TRADES. DISCONNECT AND MAKE SAFE. RETAIN CIRCUIT FOR RE-USE IN NEW LAYOUT. COORDINATE WORK ON SITE WITH MECHANICAL CONTRACTOR.
 - NEW 120V, 4.5A TRANSFER FAN AND SPEED SWITCH TO BE PROVIDED AND INSTALLED BY MECHANICAL TRADES WIRED BY ELECTRICAL. CONNECT TO EXISTING CIRCUIT FEEDING THE UNIT. COORDINATE WORK ON SITE WITH MECHANICAL CONTRACTOR.
 - PROVIDE NEW 3-PHASE, 45KVA, 600-120/208V, DRY TYPE TRANSFORMER AS INDICATED C/W CONDUIT AND WIRING. PROVIDE INTERCONNECTION BETWEEN TRANSFORMER AND ELECTRICAL PANEL. RP3 TRANSFORMER TO BE SUSPENDED. PROVIDE SUSPENDING ASSEMBLY AS REQUIRED. COORDINATE EXACT LOCATION AND CONDUIT ROUTING TO CONCESSION STAND ROOM ON SITE WITH CLIENT. REFER TO SPACE LINE DIAGRAM AND KEY PLAN FOR FURTHER INFORMATION.
 - PROVIDE NEW 120/208, 3-PHASE, 4W, 225A, 42-CIRCUIT SURFACE MOUNTED ELECTRICAL PANEL, RP3 AS INDICATED. REFER TO DRAWINGS E1 FOR PANEL DIRECTORY.
 - TYPICAL: PROVIDE NEW LIGHT FIXTURE AS INDICATED C/W CONDUIT AND WIRING. SUSPENDING ASSEMBLY AS REQUIRED. CONNECT TO INDICATED CIRCUIT. REFER TO LIGHTING FIXTURE SCHEDULE ON THIS DRAWING FOR FURTHER DETAILS.
 - PROVIDE NEW 4-LIGHT LOW VOLTAGE, DUAL TECHNOLOGY, OCCUPANCY SENSOR CATHODIC-FIT-9-RB C/W 4-LIGHT POWER RELAY PACK CAT#RP16. PROVIDE CONDUIT, WIRING AND MOUNTING ASSEMBLY AS REQUIRED. CONNECT TO INDICATED NEW LIGHTING FIXTURES.
 - PROVIDE NEW FIRE ALARM HORN/STROBE AS INDICATED TO MATCH EXISTING SYSTEM. PROVIDE CONDUIT AND WIRING AS REQUIRED. CONNECT TO THE NEXT AVAILABLE FIRE ALARM SIGNALING CIRCUIT IN THE AREA.
 - PROVIDE NEW FIRE ALARM HEAT DETECTOR AS INDICATED TO MATCH EXISTING SYSTEM. PROVIDE CONDUIT AND WIRING AS REQUIRED. CONNECT TO THE NEXT AVAILABLE FIRE ALARM SIGNALING CIRCUIT IN THE AREA. PROVIDE PROGRAMMING AND VERIFICATION REPORT.
 - PROVIDE NEW COMBINATION 150W EMERGENCY BATTERY UNIT AND REMOTE HEADS AS INDICATED C/W CONDUIT AND WIRING. CONNECT TO NEW LIGHTING CIRCUIT.
 - PROVIDE NEW ELECTRICAL DEVICES, TYPE AS INDICATED C/W CONDUIT AND WIRING. CONNECT TO INDICATED CIRCUIT. REFER TO EQUIPMENT SCHEDULE ON THIS DRAWING AND PANEL SCHEDULE ON DRAWING E1 FOR FURTHER INFORMATION. COORDINATE MOUNTING HEIGHT OF ALL DEVICES WITH ARCHITECTURAL DRAWINGS PRIOR TO ROUGH-IN.
 - PROVIDE BACK BOX FOR NEW DATA OUTLET AS INDICATED C/W 1" CONDUIT, PLASTER RING, STAINLESS STEEL CONNECTOR, PLASTIC BUSHING AND PULL STRING UP TO ACCESSIBLE CEILING SPACE. COORDINATE EXACT LOCATION ON MILLWORK AND MOUNTING HEIGHT WITH CLIENT PRIOR TO ROUGH-IN. DATA JACK AND NETWORK CABLEING BY CLIENT.

LIGHTING FIXTURE SCHEDULE

TYPE	DESCRIPTION	CATALOG NUMBER	LUMENS PER FIXTURE			VOLT	MOUNTING	REMARKS
			QTY	TYPE	UNITS			
1	NEW 610mm x 1019 LED FLAT PANEL	LITHONIA LIGHTING EPANEL-1X4-4000LM-80CR-40K-M110-Z1-M0LT	1	LED	40W	4000K	120V	SUSPENDED PROVIDE SUSPENSION KIT AS REQUIRED. SUSPEND AT 2.4m AFF



3
E2
1:30
GROUND FLOOR - MAIN ELECTRICAL ROOM (1-222)
POWER & SYSTEMS - DEMOLITION WORK



4
E2
1:30
GROUND FLOOR - MAIN ELECTRICAL ROOM (1-222)
POWER & SYSTEMS - NEW WORK

CONCESSION KITCHEN EQUIPMENT SCHEDULE

ITEM No	QTY	UNIT DESCRIPTION	MANUFACTURER/MODEL No	VOLTAGE	AMPERAGE/RHP	WATTAGE	PHASE	CONNECTION TYPE	CIRCUIT #
01	1	REFRIGERATOR, REACH-IN		120V	2.1A/ 1.7HP		1-PHASE	5-15R RECEPTACLE	RP3-1
02	1	REFRIGERATOR, REACH-IN		120V	6.3A/ 1.2HP		1-PHASE	5-15R RECEPTACLE	RP3-2
03	1	DRY STORAGE SHELVING							
04	1	BACK COUNTER W/ HAND SINK							
05	3	WASTE BIN W/ DOLLY							
06	1	ESPRESSO, HOT POWDERED DRINK		120V	15A	1800W	1-PHASE	5-20R RECEPTACLE	RP3-4
07	1	COFFEE MAKER, POUR-OVER		120V	13.9A	1670W	1-PHASE	5-20R RECEPTACLE	RP3-5
08	1	DISPENSER, BEVERAGE/NON-CARBONATED		120V	12A	1440W	1-PHASE	5-20R RECEPTACLE	RP3-6
09	1	HOT COG BELL		120V	7.8A	936W	1-PHASE	5-15R RECEPTACLE	RP3-7
10	1	SPARE ITEM NUMBER							
11	1	DISPLAY CASE, HEATED		120V	11.3A	1356W	1-PHASE	5-15R RECEPTACLE	RP3-8
12	1	POPCORN MACHINE		120V	14.3A	1716W	1-PHASE	5-20R RECEPTACLE	RP3-9
13	1	GLASS DOOR MERCHANDISER		120V	11.3A	1356W	1-PHASE	5-15R RECEPTACLE	RP3-10
14	1	POS STATION							
15	1	HEATED FOOD MERCHANDISER		120V	5.5A	660W	1-PHASE	5-20R RECEPTACLE	RP3-11
16	1	NUMBER, FOOD OVERHEAD		120V	4.2A	504W	1-PHASE	5-15R RECEPTACLE	RP3-12
17	1	REFRIGERATOR, UNDERCOUNTER		120V	2.3A/ 1.7HP		1-PHASE	5-15R RECEPTACLE	RP3-13
18	1	FREEZER, UNDERCOUNTER		120V	1.5A/ 1.5HP		1-PHASE	5-15R RECEPTACLE	RP3-14
19A	1	DEEP FRYER, ELECTRIC		208V	45A, 45A, 47A	17000W	3-PHASE	HARDWIRED	RP3-15/17/19
19B	1	DEEP FRYER, ELECTRIC		208V	45A, 45A, 47A	17000W	3-PHASE	HARDWIRED	RP3-15/17/19
20	-	CLEARED							
21	1	FRONT COUNTER W/ THREE COMPARTMENT SINK		120V			1-PHASE	5-15R RECEPTACLE	RP3-16/18/20
22	1	FRONT SERVICE COUNTER							
23	1	CONDIMENT STATION							

NOTES:
1. REFER TO PANEL DIRECTORIES FOR SIZE OF BREAKERS
2. COORDINATE EXACT LOCATION AND MOUNTING HEIGHTS ON SITE WITH ARCHITECTURAL DRAWINGS ELEVATIONS AND CLIENT

No.	Description	Date
1	ISSUED FOR TENDER	2022/09/29
0	ISSUED FOR PERMIT	2021/07/30

Revisions:

All measurements are to be checked and verified on site by the contractor before proceeding with the work. Do not scale the drawings.



Consultants:
Goodkey Weedmark Consulting Engineers
GOODKEY WEEDMARK & ASSOCIATES LIMITED
1688 Woodbine Dr. 613 727-5111 Voice
1150 Broadview Ave. 613 727-5115 Fax
Canada K1C 9B8 www.gkel.com

Project:
**TOWN OF MINDEN HILLS
S.G. NESBITT MEMORIAL ARENA
EXPANSION**
55 PARKSIDE ST.
MINDEN HILLS, ON

Drawn By: D. AGUIELO Date: JULY, 2021
Checked By: R. BOVIN Scale: AS INDICATED

Sheet Title:
**LIGHTING & FIRE ALARM
POWER & SYSTEMS
DEMOLITION & NEW WORK**

Sheet Number:
E2

RPS: 2, 1/2021, 2021-4/20/2021-4/20-SHEET.dwg 2, 1/2021, 2021-4/20/2021-4/20-SHEET.dwg 2, 1/2021, 2021-4/20/2021-4/20-SHEET.dwg

DATE: 21/07/2021 10:53 AM
PLOTDATE: 01/07/2021 14:26 PM