



## **Addendum #01**

for Tender No.

CSD22-001 - S.G. Nesbitt Memorial Arena Concession Stand Supply and Renovation

---

This addendum shall be incorporated into and form part of RFT No. CSD22-001 for the provision of S.G. Nesbitt Memorial Arena Concession Stand Supply and Renovation.

Receipt of the Addendum shall be acknowledged as part of your submission as per Section 1.9 – Addenda of the RFT document and **must be included** in the submission package before the closing date of Friday, November 18, at 12:00 noon.

The Township of Minden Hills reserves the right to reject any or all Tenders or accept any Proposal, should it deem such actions to be in the best interest of the Township.

This addendum consists of 4 pages.

### Clarifications:

1. As per section 2.17- All work must be completed by June 30, 2023.
2. All respondents are to complete the forms in the tender document, not the base bid form in the specification's attachment.
3. Section 5.5 Appendix E, is a mandatory form for the Municipality. All information is required.
4. Addendum 1 to be reviewed with attached Mechanical Addendum 1 drawings (2 pages).

### Revised specifications:

1. Section 5.7 Appendix G -Pricing and Delivery Schedule- All work to be completed by June 30, 2023.
2. As per section 5.7 Appendix G-Pricing and Delivery Schedule – Detailed warranty documentation can be provided with the closeout documents at the end of the project.
3. Appendix 'B' to omit requirements for submission for as not relevant to this project. Omit the following items:
  - "Procession and maintenance of a valid accounting designation and license "
  - "Demonstrated experience in municipal Audits and demonstrated comprehensive knowledge of municipal financial reporting requirements"

- "Demonstrated understanding of legislation relevant to the municipal environment"
  - "Well developed, professional auditing techniques and processes; and sound system of controls and review methodology;"
  - "Ability to provide necessary staffing, facilities, financial resources and expertise sufficient to address the scope of the Audit services in order to meet Township and Provincial reporting requirements, in a timely manner;"
  - "Demonstrated commitment to providing reasonable annual continuity of experienced and qualified personnel and; Demonstrated commitment to meeting all reporting deadlines."
4. Section 2.5.1 should read Section 2.6.1. Tender Surety.
  5. Section 2.6.1 Tender Surety Validity Period to read 60 calendar days from the date of Tender opening.
  6. For Hand Sink and Faucet manufacturer refer to Mechanical Addendum 1 drawing.
  7. Glass door merchandiser – Manufacturer: OMCAN Model: RS-CN-0078-S
  8. Point of sale equipment is not in contract. Will be provided by concessions stand operator.
  9. Refer to page 298 of Appendix J – Minden Hills Specs for manufacturer of triple compartment sink. Refer to Mechanical Addendum 1 drawing for manufacturer and model of faucet.
  10. Condiment station – Manufacturer: SAFCO Model: 8964BL

If you have questions regarding this matter, please contact the Township directly as outlined in Section 1.11 – Inquiries of the RFT document.

Sincerely,

Craig Belfry,  
 Director of Community Services

**Acknowledgement of Receipt**

Bidders are required to acknowledge receipt of all addenda by signing the Acknowledgement of Receipt below. Failure to submit all addenda will constitute an automatic rejection.

I/we hereby acknowledge receipt of this addendum and make allowances in my bid.

\_\_\_\_\_  
 Signature of Bidder

\_\_\_\_\_  
 Date

\_\_\_\_\_  
 Name of Company


PROJECT NAME	7 INDUSTRIAL AVE., CARLETON PLACE, ON - LAURYSSEN KITCHENS
PROJECT NO.	GWAL 2021-439
DATE	NOVEMBER 14, 2022
ADDENDUM NO.	M1

The following additions, deletions & revisions form part of the drawings and specifications for the above referenced project:

#### DRAWINGS

**1. Reference Drawings M1 and Attached Sketch ADD-M1-SK1:**

- 1.1 Mechanical contractor to provide and install sink SK1, refer to specification for sink detail. Coordinate with kitchen equipment and millwork.
- 1.2 Mechanical contractor to provide faucet (SK2) for triple sink provided by others. Coordinate faucet compatibility with triple compartment sink.

ENCLOSURE(S)	Sketch ADD-M1-SK1
ISSUED BY	<b>DISTRIBUTION</b>
Dana Newton, C.E.T. /jvo  	Christopher Yap (Parkin Architects Limited) Mario Prisone (Parkin Architects Limited) Robert Lefebvre (GWAL - Mechanical) Derek Kennedy (GWAL - Mechanical) Richard Boivin (GWAL - Electrical) Amy Girard (GWAL - Electrical) Yves Lavictoire (GWAL - Electrical)



**FRANKE**

**SK1**

Type 316 Stainless steel

**Single compartment, Counter mounted, Drop-in Kitchen sink**

To be specified

**Chicago Faucets - Faucet**



Franks Commercial-Sink

**LBS6407-316P-1-3**



201-AGNSAFC317ABCP Counter mounted, Manual, Two handles, Sink faucet, Polished chrome finish, 203 mm (8") centerset, Lead Free ANSINISF 61 compliant, ECAS10 brass construction, Less supply, 1/4 turn compression cartridge, 5.7 LPM (1.5 GPM) maximum flowrate, Male thread with laminar flow control insert in spout inlet, Goose-neck spout, 203 mm (8") spout reach, 333 mm (13-1/8") high, 102 mm (4") wrist blade handle with indexed buttons, Less drain, 13 mm (1/2") NPSM supply inlet for 10 mm (3/8") or 13 mm (1/2") flexible riser.

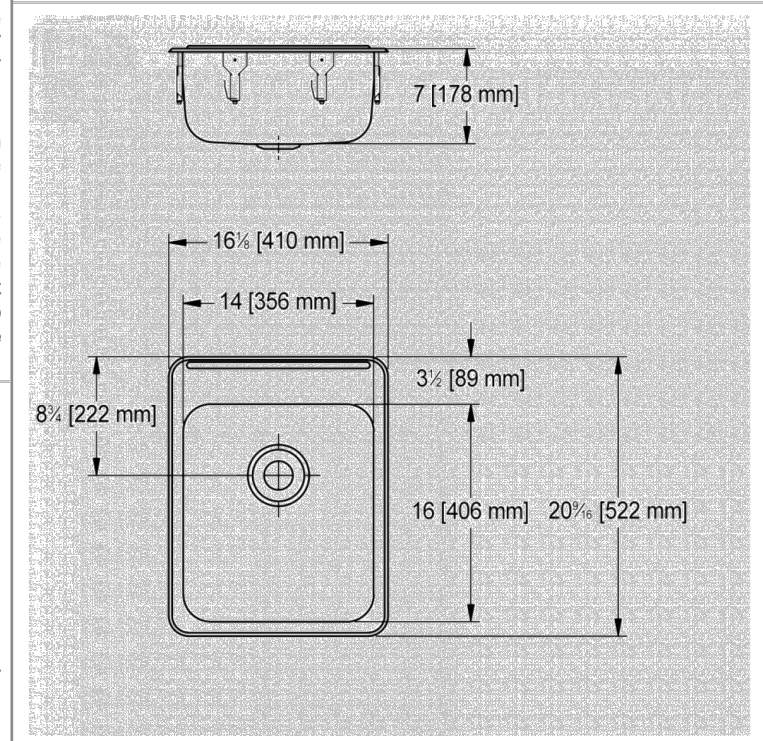
203 mm (8") centerset, With faucet ledge, 18 gauge, Type 316 Stainless steel finished to #4 satin finish, Factory installed TORQUE 11 fasteners, Factory applied rim seal, Center back waste location, 38 mm (1-1/2") (DN38) type 316 stainless steel tailpiece, 59 mm (2-1/2") type 316 stainless steel crumb cup strainer, Undercoated to reduce condensation and resonance.

**Lawler - Mixing Valve**



Codes and Compliances: ASME A112.19.3 compliant, CSA B45.4 compliant, Bowl Dimension: 356 mm (14") long, 406 mm (16") wide, 178 mm (7") deep, Overall Dimension: 410 mm (16-1/8") long, 522 mm (20-9/16") wide, 178 mm (7") high.

**TMM-1070-87500** The point of use mechanical mixing valve with thermostatic limit stop, MECHANICAL MIXING VALVE, Lead free brass body construction, Lead free brass body construction, The temperature adjusting dial is located on the cold inlet. Turning the dial clockwise will lower the outlet temperature, turning the dial counter-clockwise will raise it. The valve cannot be adjusted above its shut-off temperature of 120°F, 1.8 LPM (0.5 GPM) tempered flowrate @ 5 PSI pressure drop, Compression Fitting, 64 mm (2-1/2") high, Compression Fitting, 3/8" MNPT (9.5 mm) inlet, 3/8" MNPT (9.5 mm) outlet, 3/8" MNPT (9.5 mm) outlet, Integral rubber duck-bill backflow checks, MECHANICAL MIXING VALVE, The point of use mechanical mixing valve with thermostatic limit stop, ASSE 1070 approved ASSE lead free Certified for ASSE 1070 applications, High temperature limit stop, Automatically shuts down flow of water when temperature reaches 120 °F, 125 PSI max supply pressure, 5 PSI Minimum Operating pressure, 5 PSI Minimum Operating pressure, 125 PSI max supply pressure, 1.8 LPM (0.5 GPM) tempered flowrate @ 5 PSI pressure drop, The temperature adjusting dial is located on the cold inlet. Turning the dial clockwise will lower the outlet temperature, turning the dial counter-clockwise will raise it. The valve cannot be adjusted above its shut-off temperature of 120°F, 140 °F max, 8 LPM (2.1 GPM) flowrate @ 45 PSI, Automatically shuts down flow of water when temperature reaches 120 °F, 118 °F ±3 °F, Protects against scalding and chilling



**McGuire - Supply**



LFCK165LK Lead free, Pipe to compression, Integral check supply kit, Chrome-plated finish, 3/8" I.P.S. x 3/8" O.D., 305 mm (12") chrome-plated risers, Loose key, Faucet, Shallow wall flange

Note:	Spec Reference: 126496 Product Reference: 7313670; 7018413; 7018151; 7047032; 7016917	Estimated Total: Not available
-------	--	--------------------------------

**CHICAGO FAUCETS**  
a Geberit company

**SK2**

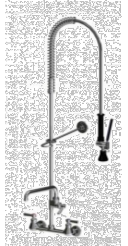
Manual sink faucet

**Manual Two handles Pre-rinse fitting**

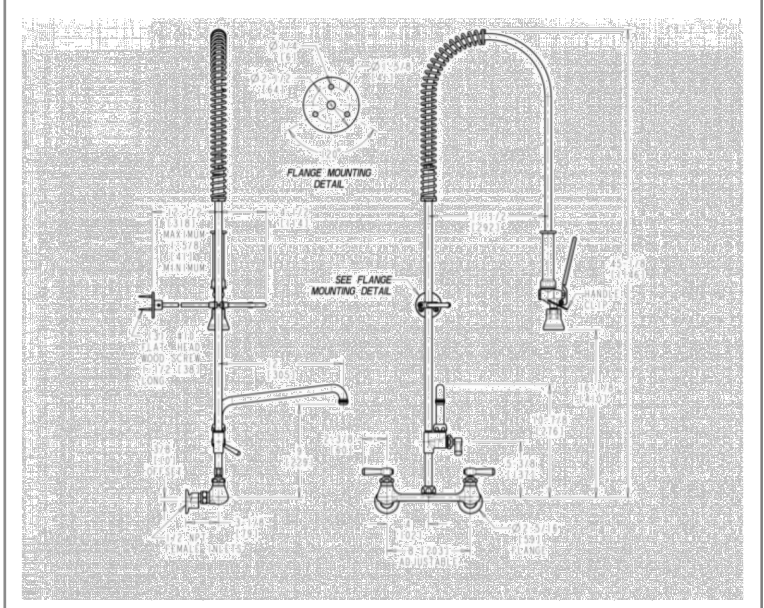
To be specified

Chicago Faucets- Faucet

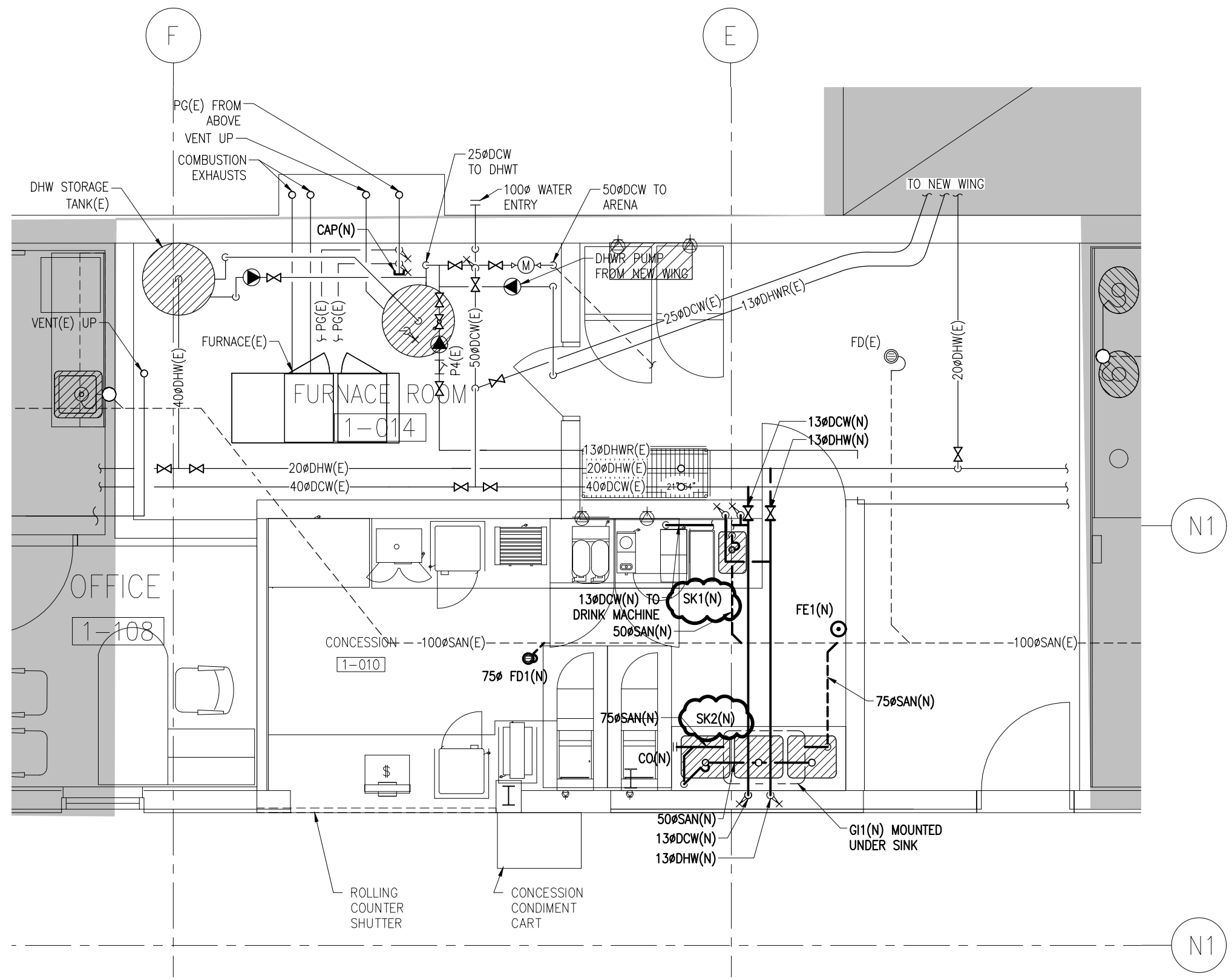
**510-G613XKCAB**



Wall-hung, Manual, Two handles, Pre-rinse fitting, Chrome-plated finish 184 - 222 mm (7-1/4" - 8-3/4") adjustable centerset, Lead Free ANSINISF 61 and ANSINISF 372 compliant, ECAS10 brass construction, Less supply, 1/4 turn ceramic cartridge with integrated check valve, 3.9 LPM (1.0 GPM) flowrate (800 PSI) pre-rinse spray valve, Spray outlet, Pre-rinse spout, Pull down, 292 mm (11-1/2") spout reach, 1148 mm (45-1/8") high, Pre-rinse spout and valve consisting of 584 mm (23") riser with spring guide, 1118 mm (44") flexible stainless steel hose with insulated handle, pipe clamp and hook assembly, Vandal-resistant 69 mm (2-3/8") lever handle with indexed buttons, Less drain, 13 mm (1/2") NPT female thread inlet.



Note:	Spec Reference: 126496 Product Reference: 7312921	Estimated Total: Not available
-------	--	--------------------------------



**PLUMBING & DRAINAGE - NEW WORK**  
**GROUND FLOOR - CONCESSION STAND**

1  
ADD-M1-SK1 1:50

Client
--------

2022/11/14	ISSUED FOR ADDENDUM M1	0
DATE	REVISION	REF

THE ENGINEER WIVES ANY AND ALL RESPONSIBILITY AND LIABILITY FOR PROBLEMS WHICH ARISE FROM FAILURE TO FOLLOW THESE PLANS, SPECIFICATIONS AND THE DESIGN INTENT THEY CONVEY, OR FOR PROBLEMS WHICH ARISE FROM OTHER FAILURE TO OBTAIN AND / OR FOLLOW THE ENGINEER'S GUIDANCE WITH RESPECT TO ANY ERRORS, OMISSIONS, INCONSISTENCIES, AMBIGUITIES OR CONFLICTS WHICH ARE ALLEGED.

THIS DRAWING IS THE PROPERTY OF GOODKEY WEEDMARK & ASSOCIATES LIMITED AND ALL COPYRIGHTS ARE RESERVED. NO USE OF THIS DRAWING MAY BE MADE WITHOUT EXPRESS WRITTEN CONSENT.

DO NOT SCALE DRAWINGS

L'INGÉNIEUR DÉCLINE TOUTE RESPONSABILITÉ DÉCOULANT DE PROBLÈMES FAISANT SUITE AU NON RESPECT DES PLANS, DEVIS ET DE L'INTENTION DU CONCEPTEUR QU'ILS INDICENT OU DE TOUTS LES PROBLÈMES POUVANT RÉSULTER DU DÉFAUT D'OBTENIR ET / OU DE SUIVRE LES CONSEILS DE L'INGÉNIEUR EN CE QUI CONCERNE LES ERREURS, OMISSIONS, INCONSISTANCES, AMBIGUITÉS OU CONFLITS ALLEGUÉS.

CE DESSIN EST LA PROPRIÉTÉ LITTÉRAIRE DE GOODKEY WEEDMARK & ASSOCIATES LIMITED ET TOUS LES DROITS SONT RÉSERVÉS. L'UTILISATION EST INTERDITE SANS LE CONSENTEMENT ÉCRIT DE L'AUTEUR.

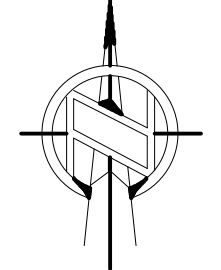
NE PAS MESURER LES DESSINS À L'ÉCHELLE

**GWAL 65**  
Goodkey Weedmark & Associates Ltd.

1688 Woodward Dr. Ottawa Ontario Canada K2C 3R8

613 727-5111 Voice  
613 727-5115 Fax  
www.gwal.com Web

Project north  
Nord du projet



Seal/Sciau

Project/Projet  
**TOWN OF MINDEN HILLS  
MEMORIAL ARENA  
EXPANSION**

Drawing title/Titre du dessin  
**MECHANICAL PLUMBING  
NEW WORK REVISIONS**

Scale	AS NOTED	Project no./No. du projet	2021-439
Echelle		Design by	D.NEWTON
Design by	D.NEWTON	Conçu par	D.NEWTON
Drawn by	D.NEWTON	Dessiné par	R.LEFEBVRE
Reviewed by	R.LEFEBVRE	Examiné par	

**ADD-M1-SK1**  
1