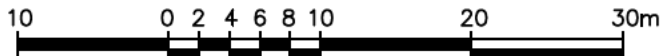


PLAN OF SURVEY OF
PART OF LOT 29
CONCESSION 14
GEOGRAPHIC TOWNSHIP OF SNOWDON
TOWNSHIP OF MINDEN HILLS
COUNTY OF HALIBURTON

SCALE 1 : 500
TAYLOR G. DERUITER, O.L.S.



THE INTENDED PLOT SIZE OF THIS PLAN IS 457.2mm IN WIDTH
BY 609.6mm IN HEIGHT WHEN PLOTTED AT A SCALE OF 1:500.

SCHEDULE				
PART	LOT	CONCESSION	PIN	AREA
1	Pt. 29	14	PIN 39308-0328 (LT)	1.23 Ha.
2				0.653 Ha.

PART 1 & 2 COMPRISE ALL OF PIN 39308-0328 (LT).

NOTES

BEARINGS ARE UTM GRID, DERIVED FROM OBSERVED REFERENCE POINTS A AND B, BY STATIC GNSS OBSERVATIONS, SHOWN HEREON, BEARING OF N32°55'00"W, REFERRED TO THE CENTRAL MERIDIAN OF UTM ZONE 17 (81° WEST LONGITUDE) NAD 83 (CSRS) v7.1 EPOCH 2010. GNSS BASELINE POST PROCESSED FROM LEICA REFERENCE STATION - HALIBURTON.

DISTANCES ARE GROUND AND CAN BE CONVERTED TO GRID BY MULTIPLYING BY THE COMBINED SCALE FACTOR OF 1.00000641.

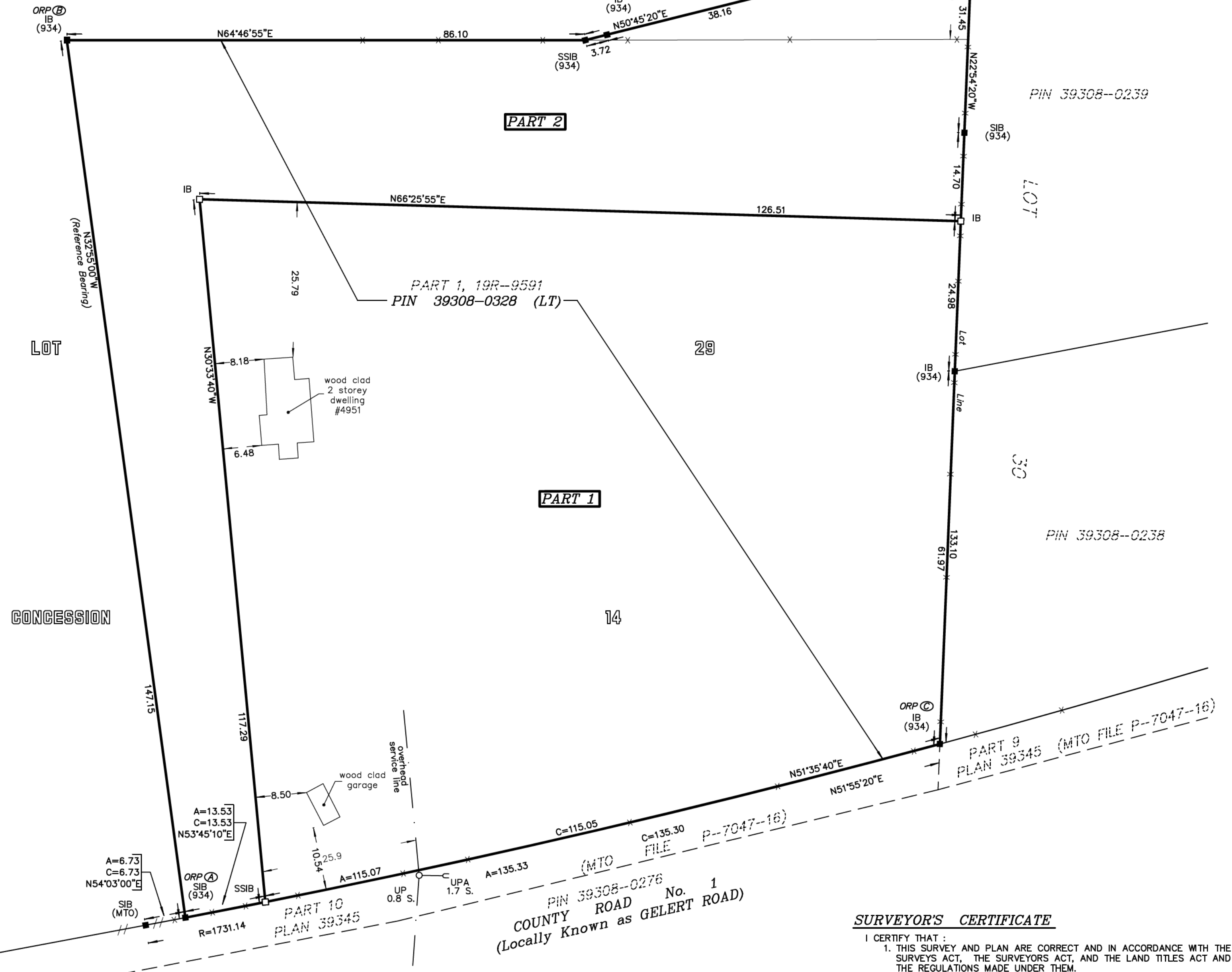
PROPERTY LINES ARE UNFENCED, UNLESS OTHERWISE NOTED.

FENCES ARE LOCATED ON PROPERTY LINES, UNLESS OTHERWISE NOTED.

SSIB'S PLANTED DUE TO INSUFFICIENT OVERBURDEN.

ROAD ALLOWANCE BETWEEN
TOWNSHIPS OF SNOWDON AND MINDEN

PIN 39308-0329



METRIC DISTANCES AND COORDINATES ARE IN METRES AND CAN BE CONVERTED TO FEET BY DIVIDING BY 0.3048.

OBSERVED REFERENCE POINTS (ORPs) DERIVED FROM STATIC GNSS OBSERVATIONS, BASELINE POST PROCESSED FROM LEICA REFERENCE STATION - HALIBURTON, UTM ZONE 17, NAD83 (CSRS) v7.1 EPOCH 2010. COORDINATES TO RURAL ACCURACY PER SEC. 14 (2) OF O.REG. 216/10.

POINT ID	NORTHING	EASTING
ORP A	4980415.46	691932.43
ORP B	4980538.99	691852.51
ORP C	4980494.95	692033.53

COORDINATES CANNOT, IN THEMSELVES, BE USED TO RE-ESTABLISH CORNERS OR BOUNDARIES SHOWN ON THIS PLAN.

LEGEND

SYMBOL	DENOTES
□	SURVEY MONUMENT PLANTED
■	SURVEY MONUMENT FOUND
SSIB	SHORT STANDARD IRON BAR 25mm x 25mm x 60cm
SIB	STANDARD IRON BAR 25mm x 25mm x 120cm
IB	IRON BAR 15mm x 15mm x 60cm
Wt.	WITNESS
—X—	POST & WIRE FENCE
—//—	RAIL FENCE
ORP	OBSERVED REFERENCE POINT
UP	UTILITY POLE
UPA	UTILITY POLE ANCHOR
P1	19R-9591
MTO	MINISTRY OF TRANSPORTATION ONTARIO
934	G. BISHOP SURVEYING & CONSULTING LTD

SURVEYOR'S CERTIFICATE

I CERTIFY THAT:
1. THIS SURVEY AND PLAN ARE CORRECT AND IN ACCORDANCE WITH THE SURVEYS ACT, THE SURVEYORS ACT, AND THE LAND TITLES ACT AND THE REGULATIONS MADE UNDER THEM.
2. THIS SURVEY WAS COMPLETED ON THE 10th DAY OF SEPTEMBER, 2025.

DATE: OCTOBER 16, 2025

TAYLOR G. DERUITER
ONTARIO LAND SURVEYOR

THIS PLAN OF SURVEY RELATES TO AOLS PLAN SUBMISSION FORM NUMBER V-113759.

P. A. MILLER SURVEYING LTD.
ONTARIO LAND SURVEYOR

P. O. BOX 520
STIRLING
(613) 396-3070

FILE:	25-12496	CID: ????
DWG:	25-12496.dwg	CHK: TGD X